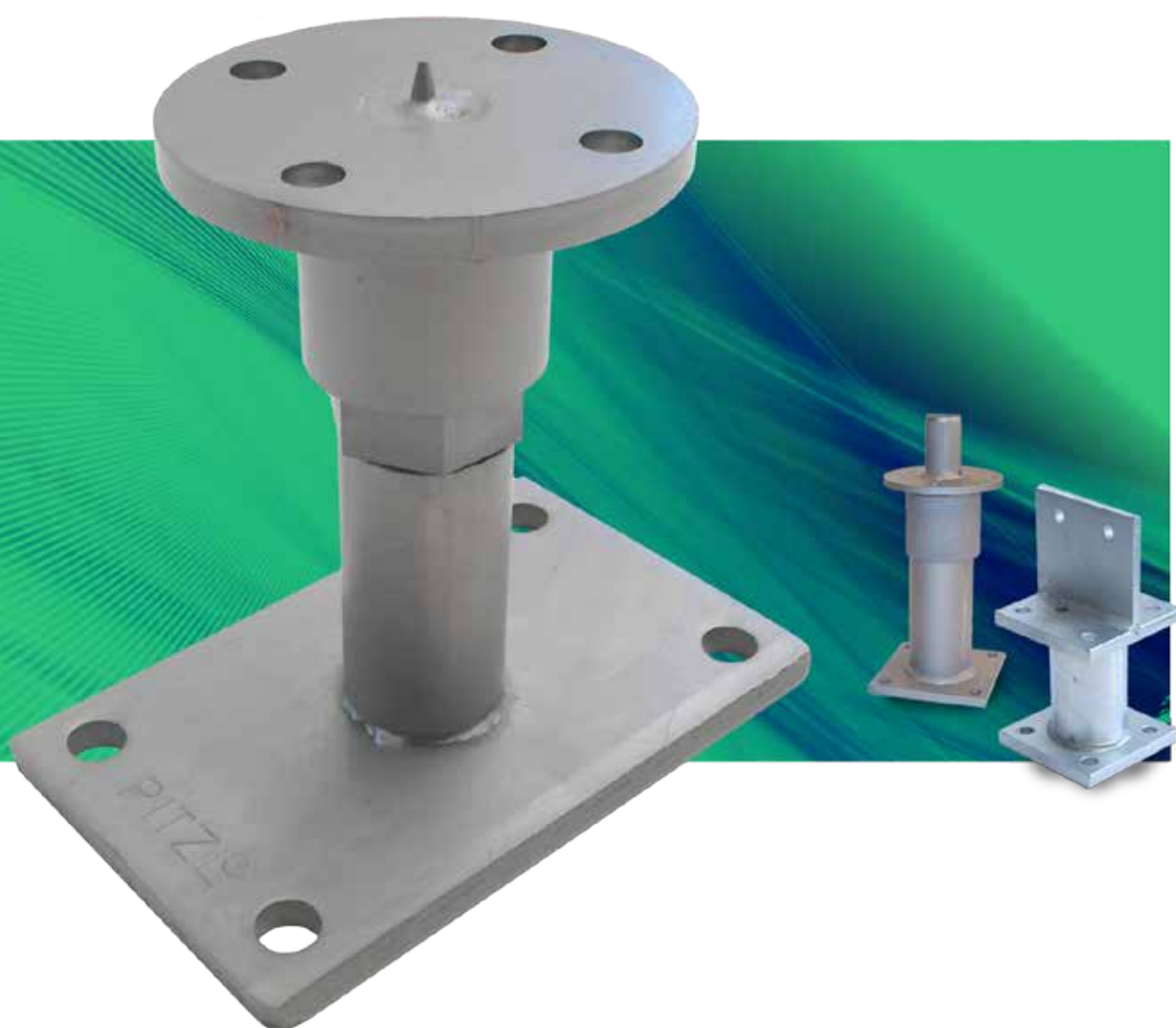


The leading full - range supplier for wood connection systems



## Novelties Post bases 2014





## Post bases Plug-in system Z

Turn – Click, the new innovative post base system.

With few handlings, without time-consuming and inconvenient screwing the new plug-in system allows an efficient solution of assembly. Maximal load capacities in compression, traction and horizontal stresses are guaranteed through the optimal material thickness of the post base. A height adjustment is possible even when mounted and under heavy load.

An European Technical Approval is requested.



10529.1090



10521.1090

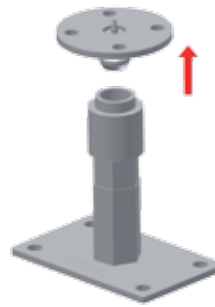
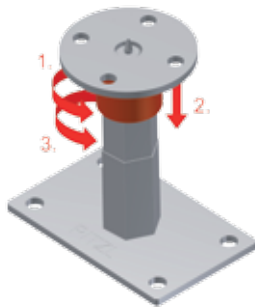



10530.1090

## Thread M24

Item no.	Upper plate mm	Lower plate mm	Thread	Lower thread	Adjustment range mm	Version
10529.1090	Ø 96 x 8 mm	160 x 100 x 8 mm	M24	90 mm	141 - 201	Centring spike
10529.1190	Ø 96 x 8 mm	160 x 100 x 8 mm	M24	150 mm	201 - 261	Centring spike
10521.1090	Ø 96 x 8 mm	160 x 100 x 8 mm	M24	90 mm	141 - 201	Mandrel Ø 20 x 65 mm
10521.1190	Ø 96 x 8 mm	160 x 100 x 8 mm	M24	150 mm	201 - 261	Mandrel Ø 20 x 65 mm
10530.1090	Ø 96 x 8 mm	160 x 100 x 8 mm	M24	90 mm	141 - 201	Tube Ø 42,4 x 70 mm
10530.1190	Ø 96 x 8 mm	160 x 100 x 8 mm	M24	150 mm	201 - 261	Tube Ø 42,4 x 70 mm

Also available: Before long the new plug-in system will be also available with thread M30.



Installation instruction:  The pre-assembly of the post base is already performed in the workshop and provides for a quick and comfortable work on the building site. The innovative Pitzl's plug-in system can be smoothly and fast locked and unlocked. The upper plate can with only few gestures be separated from the rest of the connector.

- Turn the fastening anticlockwise up to stop.
- Press fastening down.
- Press fastening further anticlockwise.

## New heavy-duty post bases up to 286 kN

The in-house fabrication provides Pitzl to react fast and flexible to customers requests. Because of snow quantities that disproportionally fell in large parts of Europe it was necessary to develop and manufacture quickly a fitted post base.

The most massive produced post base 11008. ... is available as of now rigid as well as adjustable. The optimally designed constructive form allows very high load capacities for compression up to 286 kN and also for horizontal load actions up to 31,7 kN. The tried and trusted Pitzl screw connection concept or a strut with dowel boreholes guarantee a lift-off value up to 38,8 kN.

An European Technical Approval is requested.

### Rigid versions



11008.1160  
11008.1250



11008.2160  
11008.2250

Item no.	Upper plate mm	Lower plate mm	Height	Tube Ø mm	Version	Characteristic load capacity
11008.1160	140 x 140 x 15	140 x 140 x 15	160	82,5	With threaded mandrel M24x150 mm	ca. 286 kN
11008.1250	140 x 140 x 15	140 x 140 x 15	250	82,5	With threaded mandrel M24x150 mm	ca. 279 kN
11008.2160	140 x 140 x 15	140 x 140 x 15	160	82,5	With strut 120 x 140 x 10 mm	ca. 286 kN
11008.2250	140 x 140 x 15	140 x 140 x 15	250	82,5	With strut 120 x 140 x 10 mm	ca. 279 kN

If you need a special height, you can order it as follows:

for ex. item no. 11008.1XXX	Upper plate with threaded mandrel
for ex. item no. 11008.2XXX	Upper plate with strut

The first position after the point always refers to the upper part.

The second, third and fourth positions always refer to the height.

Order example: 11008.1300 - with threaded mandrel, 300 mm high

### Adjustable Version



11008.6150  
11008.6200  
11008.6250

Heavy-duty adjustable post bases:

To enable with heavy load action a quick and precise assembly and compensate eventual height differences.

Item no.	Upper plate mm	Lower plate mm	Adjustment range mm	With tube mandrel
11008.6150	Ø 140 x 8	140 x 140 x 10	150 - 200	Ø 42,4 x 70 mm
11008.6200	Ø 140 x 8	140 x 140 x 10	200 - 250	Ø 42,4 x 70 mm
11008.6250	Ø 140 x 8	140 x 140 x 10	250 - 300	Ø 42,4 x 70 mm



Fast, simple and precise: for the best result

- Timber connectors
- Post bases
- Balcony posts / Fence posts
- Tools / Accessories
- always up to date with [www.pitzl-connectors.com](http://www.pitzl-connectors.com)

Manufacturer:

**Pitzl GmbH & Co. KG**  
Siemensstraße 26  
84051 Altheim - Germany  
Tel.: +49 8703 9346-0  
Telefax: +49 8703 9346-55  
Email: [info@pitzl.de](mailto:info@pitzl.de)  
[www.pitzl-connectors.com](http://www.pitzl-connectors.com)

We recommend our distributor:



For further information and technical details, downloads and helpful video tutorials: [www.pitzl-connectors.com](http://www.pitzl-connectors.com)  
Alternatively, our competent staff are always available for advice: +49 8703 9346-0.